



**PartsBadger**  
YOUR ONLINE MACHINE SHOP

PartsBadger  
W66N205 Commerce Ct.  
Cedarburg, WI 53012  
(331) 223-4378  
sales@parts-badger.com

## INDUSTRIAL GRADE 3D PRINTING

Start quoting online today at  
[parts-badger.com/3d-printing-quote](https://parts-badger.com/3d-printing-quote)

In addition to CNC machining, PartsBadger offers industrial grade 3D printing as a manufacturing service. Additional fiber reinforcement can be added to drastically increase strength and other properties of the part.

### Capabilities

|                                |  |
|--------------------------------|--|
| <b>Materials</b>               | Carbon Fiber Infused Black Nylon / High strength nylon & carbon fiber composite<br>White Nylon / A non-abrasive, engineering grade thermoplastic   |
| <b>Fiber Reinforcement</b>     | Carbon Fiber / Increases stiffness and strength, highest strength-to-weight ratio<br>Kevlar / Lowest density of all fibers with increased impact resistance<br>HSHF Fiberglass / High strength, high temperature<br>Fiberglass / Lowest cost fiber, 11x more rigid than PLA, 26x more rigid than Nylon |
| <b>Post Printing Processes</b> | Support Removal / Done as a standard on all parts<br>Internal Threads / Added via heat-set threaded inserts after printing.  |

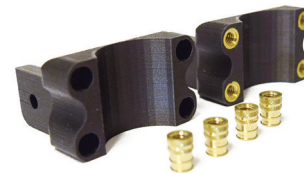
## More information

### Fiber Reinforcement



Fiber reinforcement can be added in 10%, 25%, 50% or 75% of total part volume. It can be focused on specific part features if required. Refer to the material datasheet for specifications on available fiber.

### Threaded Inserts



For parts with interior threads called out, heat-set threaded inserts will be added post printing. The part files will need to be modified to accept these inserts. The design of certain parts may inhibit this.

## Need Batch Shipments?

PartsBadger offers inventory management for batch releases. Inquire with your rep.

### Size Restrictions

**Max** 12.9" x 10.5" x 7.8"  
(330 x 270 x 200 mm)

### File Types

**3D Files** .STP .STEP .STL  
**2D Files** .PDF or .DWG

### Lead Time

**Standard** 7 business days

### Tolerances

**Standard**  $\pm 0.0197"$   
( $\pm 0.5$  mm)